

**LANDSCAPE & RESTORATION SCHEME**

The landscape and restoration scheme for the proposed sand & gravel pit at Knockroe aims at minimising the visibility of the extraction works during the operational period, as well as restoring the existing and proposed pit areas to a combination of a natural habitat and a agricultural land use. Both are beneficial uses, as recommended in the 2006 EPA Guidelines on Environmental Management in the Extractive Industry (Non-Scheduled Minerals).

**LANDSCAPE PHASE**

To be carried out on commencement of the proposed development, consisting of the following elements:

- Retention of all existing trees / scrub / woodland vegetation within the defined boundary of the applicant, with the exception of a small number of trees / scrub vegetation along the proposed access track (refer to Figure 2-6 Vegetation Removal Plan for further information).
- Native hedge planting along the northern and part of the south-western and eastern boundaries of the proposed extraction area, to mark / secure the edge of the pit slopes, provide habitat linkage and compensate for the loss of existing trees / scrub.

**RESTORATION PHASE**

To be carried out on completion of all proposed extraction works, consisting of the following elements:

- Restoration of the pit floor to agricultural grassland. This will be achieved by the removal of any machinery and stockpiles, the spreading of subsoil and topsoil (using material stored on site), the cultivation of the ground in preparation for grass seeding and seeding with a suitable agricultural grass mix.
- The pit slopes will be left at stable angles, using subsoil and topsoil material stored on site. They will then be left to be naturally colonised with locally occurring grass and scrub species (i.e. natural regeneration).
- Planting of two pockets of native trees in the north-western corner of the extraction area to support the natural regeneration of the pit slopes.

**GENERAL NOTES**

**Earthworks:** All topsoil will be stripped first and will be stored in temporary stockpiles less than 2m in height. The overburden will be stripped first and stored in separate stockpiles.

**Grass Seeding:** All grass seeding will take place under suitable weather conditions prevail. The surface preparation and the seeding specifications will be as per the seed manufacturer's instructions.

**Tree stock:** Both proposed mixes contain locally occurring native species. All of the trees/scrubs are proposed to be supplied as transplants at 40-120cm height, as this type of stock is known to establish more successfully compared to larger stock.

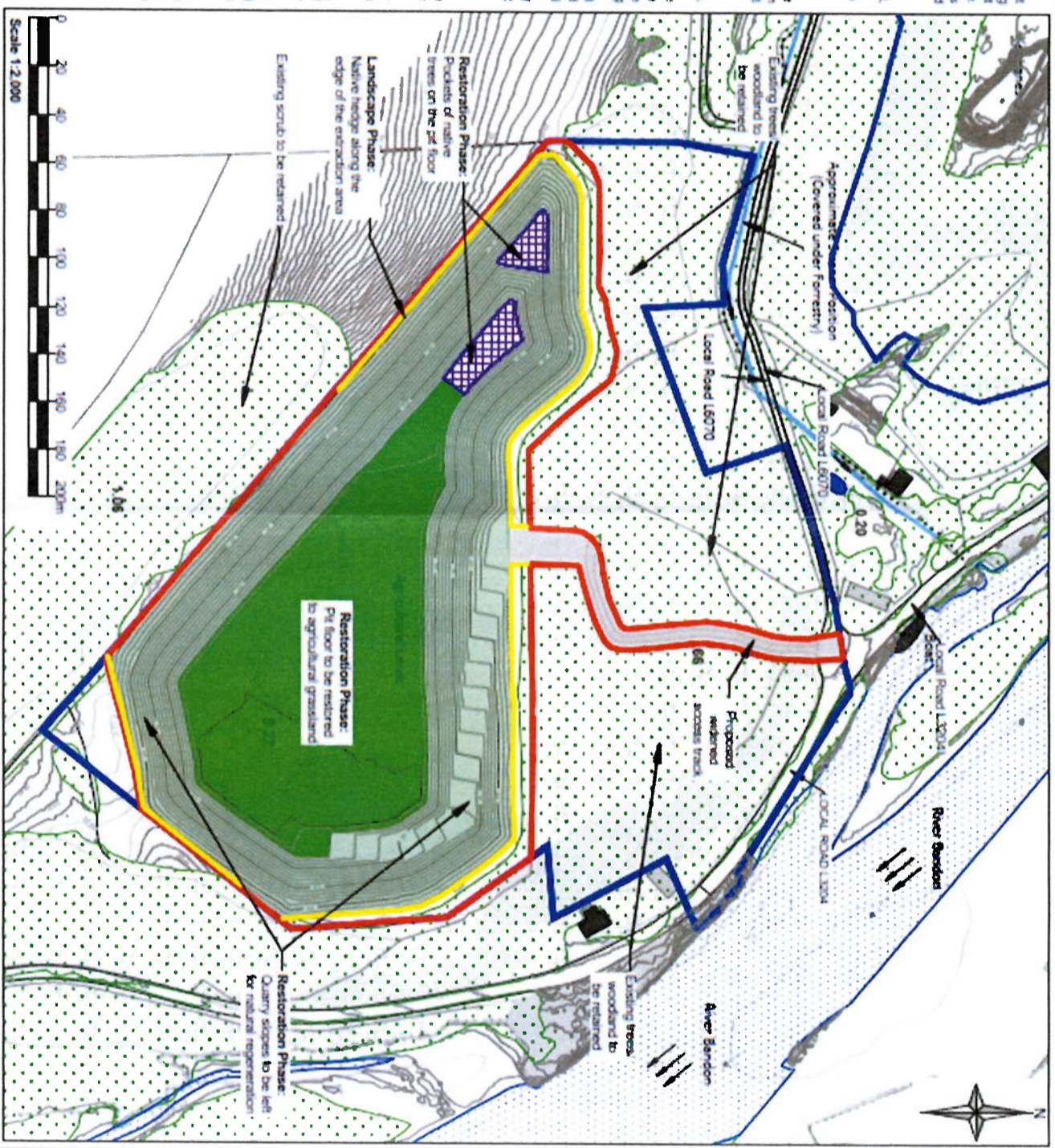
**Native Tree Planting:** To be planted at 1.5m centres, i.e. 1 plant per 2.25m<sup>2</sup> (Approx. 800m<sup>2</sup> in total = 350 plants). Transplants to be planted randomly with no more than 4-6 plants of the same species in a group. All plants to be protected with spruce guards.

**Hedge Planting:** To be planted as a double row of staggered plants, using 4 plant/meter (40cm between the rows and ca. 25cm between the staggered plants. Approx. 680 lin.m. in total = 2,600 plants). Transplants to be planted randomly with no more than 5 plants of the same species in a row. All plants to be protected with spruce guards.

**Planting works:** All plant handling, planting and establishment works will be carried out in accordance with current best practice and will take place in the appropriate planting season (i.e. bare root planting: November to March only) and in favourable weather conditions.

**Aftercare:** Establishment maintenance will be carried out for 2 years following the planting works (minimum 3 maintenance visits per year, i.e. spring, summer and autumn). This will include weed control, replacement planting where required and the adjustment/removal of spruce guards.

All planting, and maintenance works will be carried out by a suitably qualified landscape contractor.



**NATIVE TREE MIX**

No.	Plant Name	Common Name	Height (cm)	Age/Pit Size %
<b>Transplants</b>				
20	Aulus glutinosa	Common Alder	60-90	1+1
50	Corylus avellana	Hazel	60-90	1+0
35	Crataegus monogyna	Hawthorn	60-90	1+1
50	Ilex aquifolium	Holly	60-80	2L
35	Prunus spinosa	Blackthorn	60-90	1+0
20	Quercus robur	Pedunculate oak	60-90	1+0
35	Rosa canina	Dog rose	40-60	1+1
35	Saxifraga	Saxifrage	60-90	0+1
35	Sambucus nigra	Elder	60-90	1+1
35	Sorbus aucuparia	Rosarian	60-90	1+1

**NATIVE HEDGE MIX**

No.	Plant Name	Common Name	Height (cm)	Age/Pit Size %
<b>Transplants</b>				
130	Aulus glutinosa	Common Alder	60-90	1+1
380	Corylus avellana	Hazel	60-90	1+0
780	Crataegus monogyna	Hawthorn	60-90	1+1
260	Ilex aquifolium	Holly	60-80	2L
520	Prunus spinosa	Blackthorn	60-90	1+0
380	Rosa canina	Dog rose	40-60	1+1
130	Sambucus nigra	Elder	60-90	1+1

Figure 2-5 of EIAR: proposed restoration plan showing replanting of native tree plots



**Notes**

- 1. All pits by AGM Ireland, dated August 2024

**Legend**

- Land Boundaries
- Proposed Access Boundary (i.e. 4.5m wide)
- Landscaping Phase (to be implemented on commencement of the extraction works)
- Proposed native tree planting
- Restoration Phase (to be implemented on completion of extraction works)
- Areas to be returned to agricultural grassland
- Areas to be left for natural regeneration
- Proposed native tree planting

**www.slrcconsulting.com**

**FINAL**

**KEOZHANE READY MIX LTD.**

**SAND & GRAVEL PIT KNOCKROE, BANDON, CO. CORK**

**PROPOSED LANDSCAPE AND RESTORATION PLAN**

12.000 @ A3 066557 00001

CN CN AM AM

04/25 04/25 04/25 04/25

**FIGURE 25**

**AN COIMISIUN PLEANÁLA**

**16 MAR 2026**

**LTR DATED FROM 1/2**

**LDC-500890-26**

**ACP-**

**Planning Department**

**04 DEC 2025**

**Wool County Council**

**County Hall**